

# Canon Snowy owl (Female) : Assembly Instructions

Canon ® is a registered trademark of Canon Inc. © Canon Inc. © Ikuo Anazawa



## Snowy owl (Bubo scandiacus)

The snowy owl is covered in snow-white feathers. This large species of owl is mainly found in Arctic tundra areas. The snowy owl can rotate its head up to 270 degrees giving it an extremely wide range of vision. While the male is almost purely white, the female's feathers are streaked with shades of black or brown. The female is also bigger than the male meaning that, unlike other owls, the snowy owl's sex can be easily distinguished. Unlike most other owls, the snowy owl is active during daylight hours. Summer in the Arctic circle features nights of "midnight sun", and the snowy owl, living in open areas such as tundras, grasslands, wetlands, or rocky areas, must hunt for prey from an elevated point with maximum vision of the area. For this reason, snowy owls are often very active during the day, even though hunting is commonly done in the mornings or evening. Their prey consists mostly of small rodents, but they occasionally feed on other birds too.

This papercraft is about one half the size of a real snowy owl.

### Assembly Instructions

- 1) Carefully cut out the parts.
- 2) Make mountain folds and valley folds along the dotted lines, as indicated by the directions.
- 3) Assemble the parts in the order shown by the numbers on the glue tabs. (Read the assembly instruction for more information.)
- 4) Attach the parts in order. (Read the assembly instruction for more information.)
- 5) Your Paper craft model is finished.

### Tools

Scissors, glue (We recommend craft glue.), rubber band

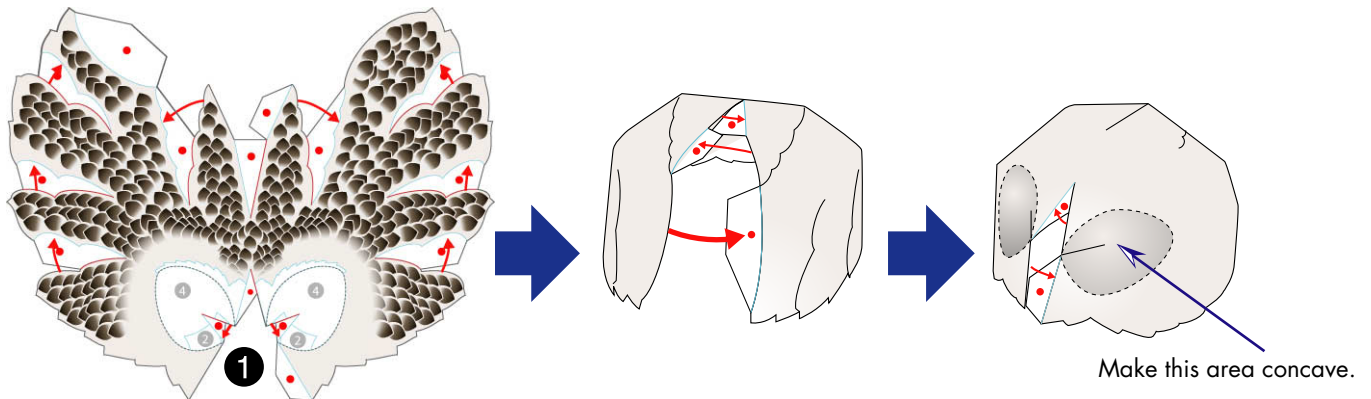
### Caution

Glue, scissors and other tools may be dangerous to young children so be sure to keep them out of the reach of young children.

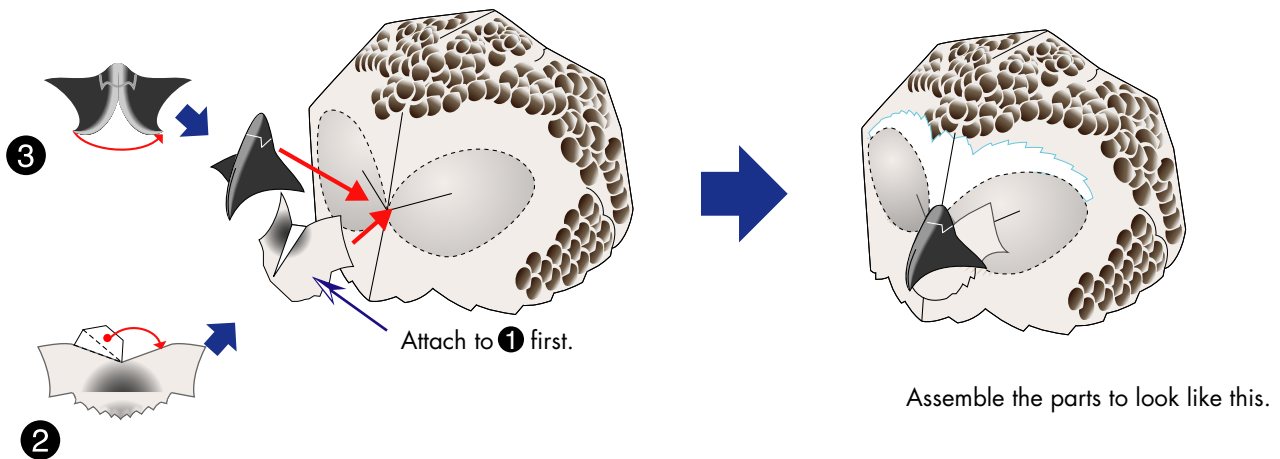
### Notation Key

	—————	Scissors line
	—————	Cut in line
	—————	Glue up to this line
	- - - - -	Mountain fold
	- - - - -	Valley fold
	●	Glue spot
	●	Glue reverse side

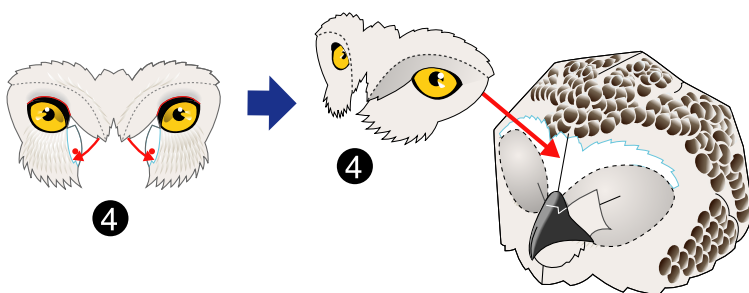
## Assemble ①.



## Assemble ② and ③, and attach them to the head, starting with ②.

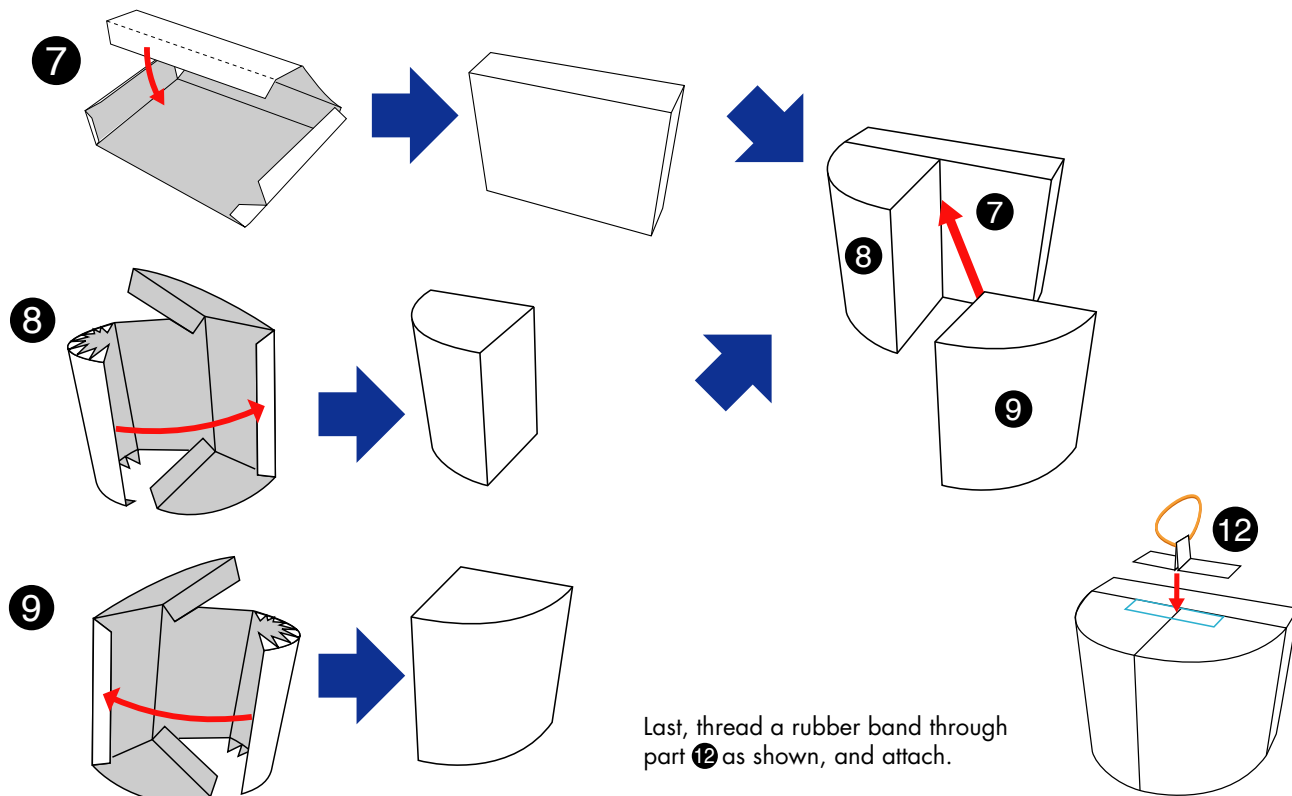


## Assemble ④, and attach them to the head.

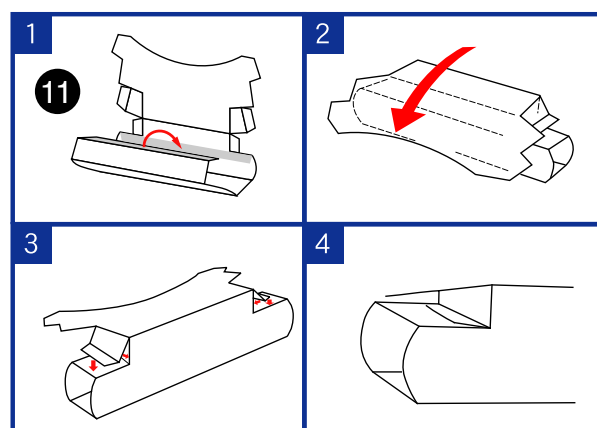


Completed head

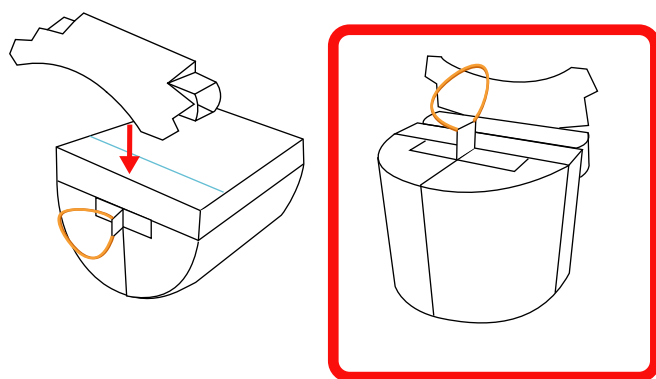
### Make the internal frame of the body.



### Assemble 11, and attach it to the internal frame.



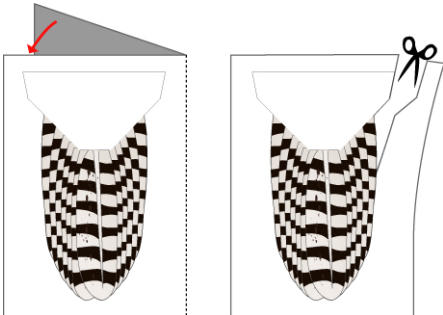
The shape of 11 is very complicated, so take extra care when assembling it, following the assembly order shown in the above diagram.



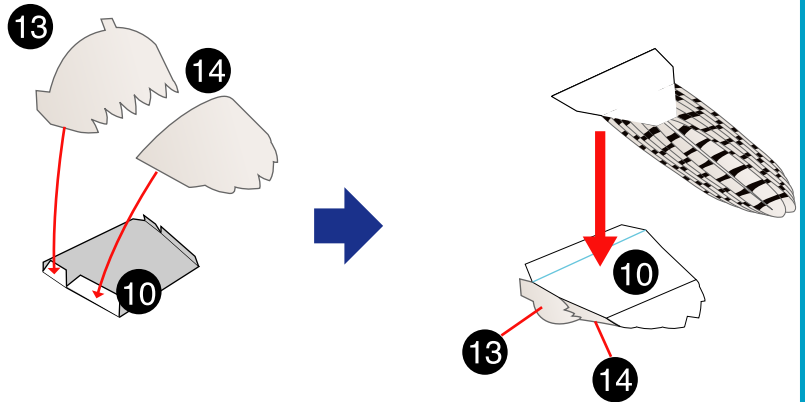
**Completed internal frame**

**Assemble 10, 13, and 14, and 17 attach them to the body.**

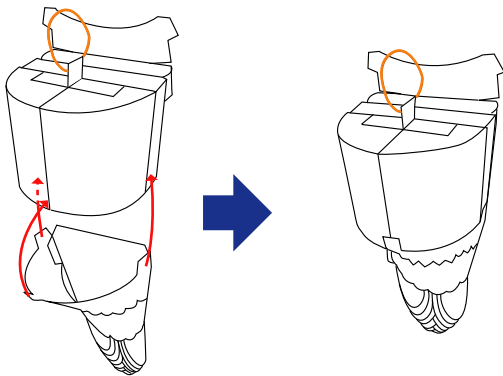
17



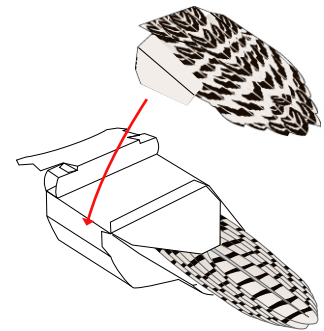
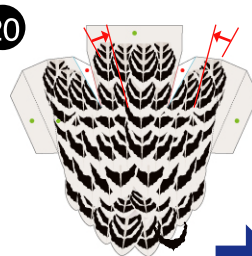
Fold in half and glue together before cutting out.



**Glue the tail feathers to the internal frame, and glue to 20.**

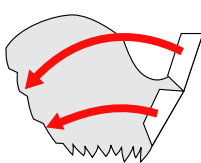


20



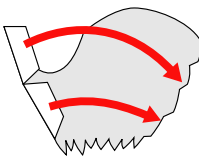
**Assemble 15 and 16, and attach them to the internal frame.**

15

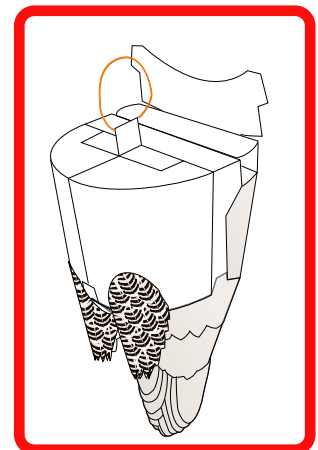
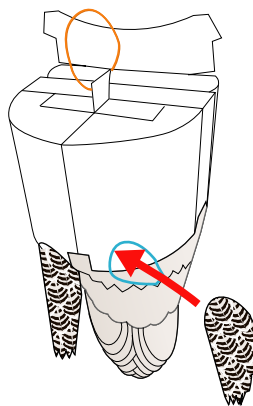


Front

16

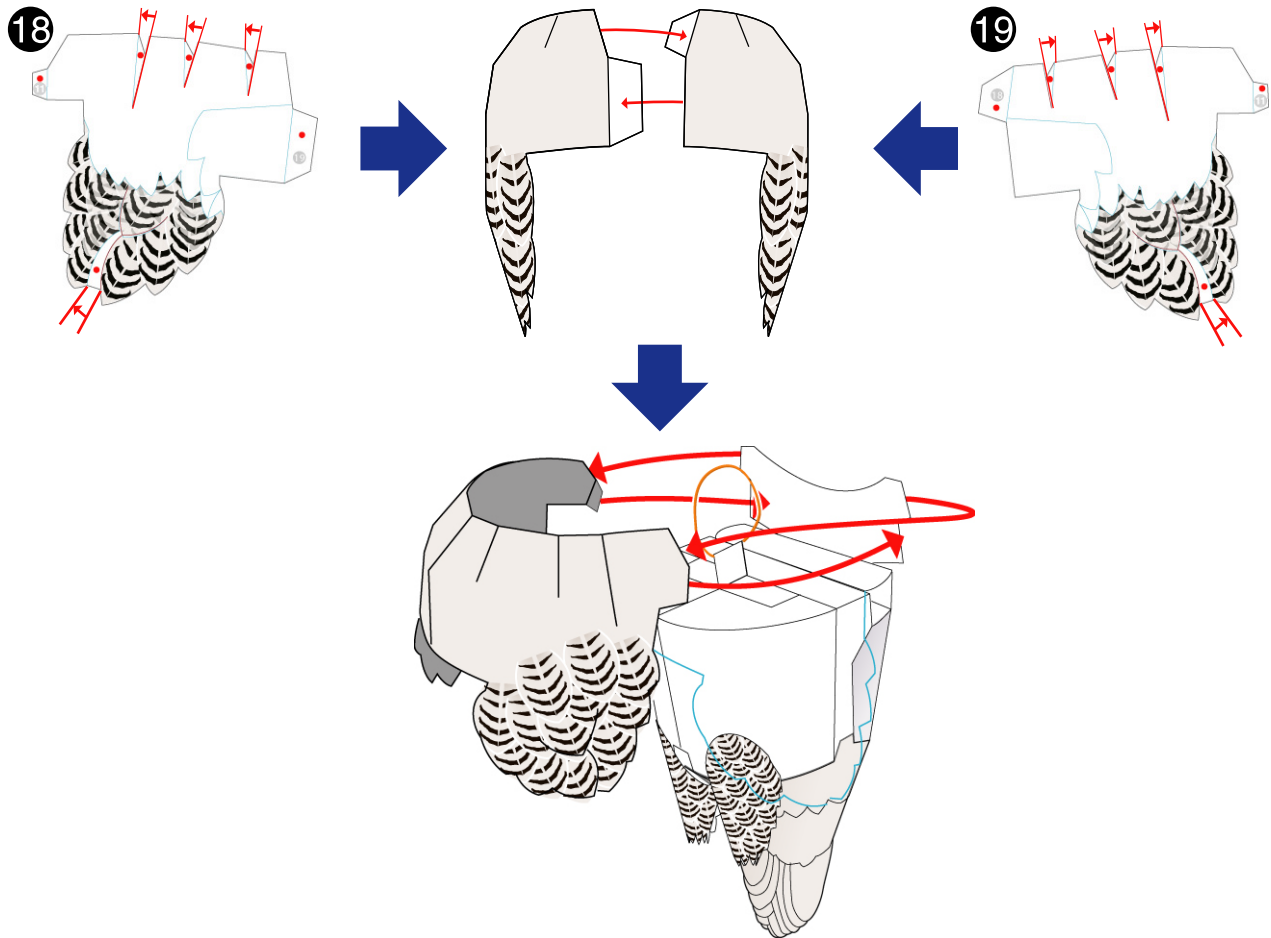


Back

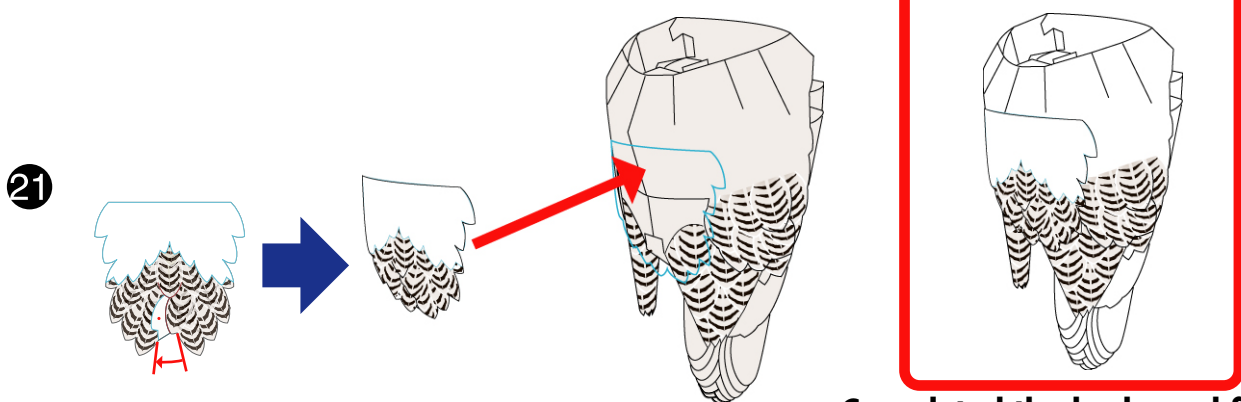


**Body feathers and upper part of the legs complete.**

**Assemble ⑱ and ⑲, glue them together and attach them to the body.**



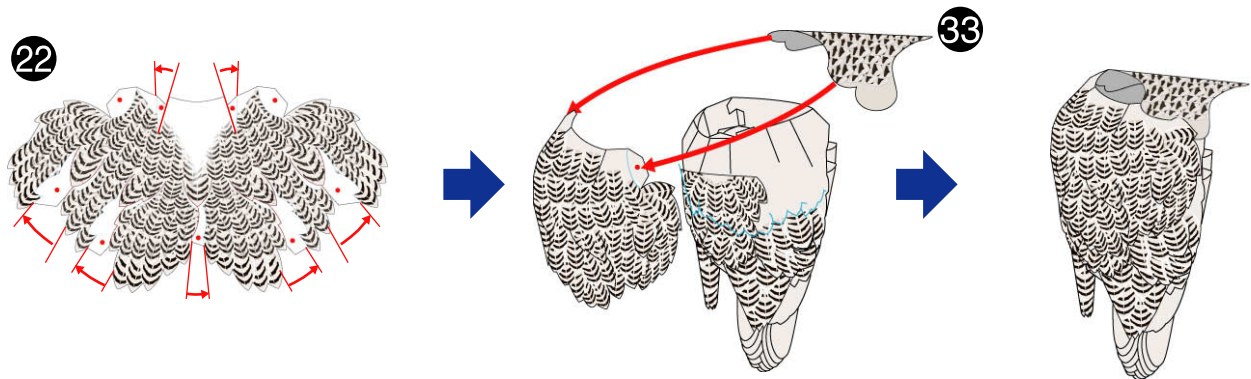
**Assemble ㉑, glue to the center of the body.**



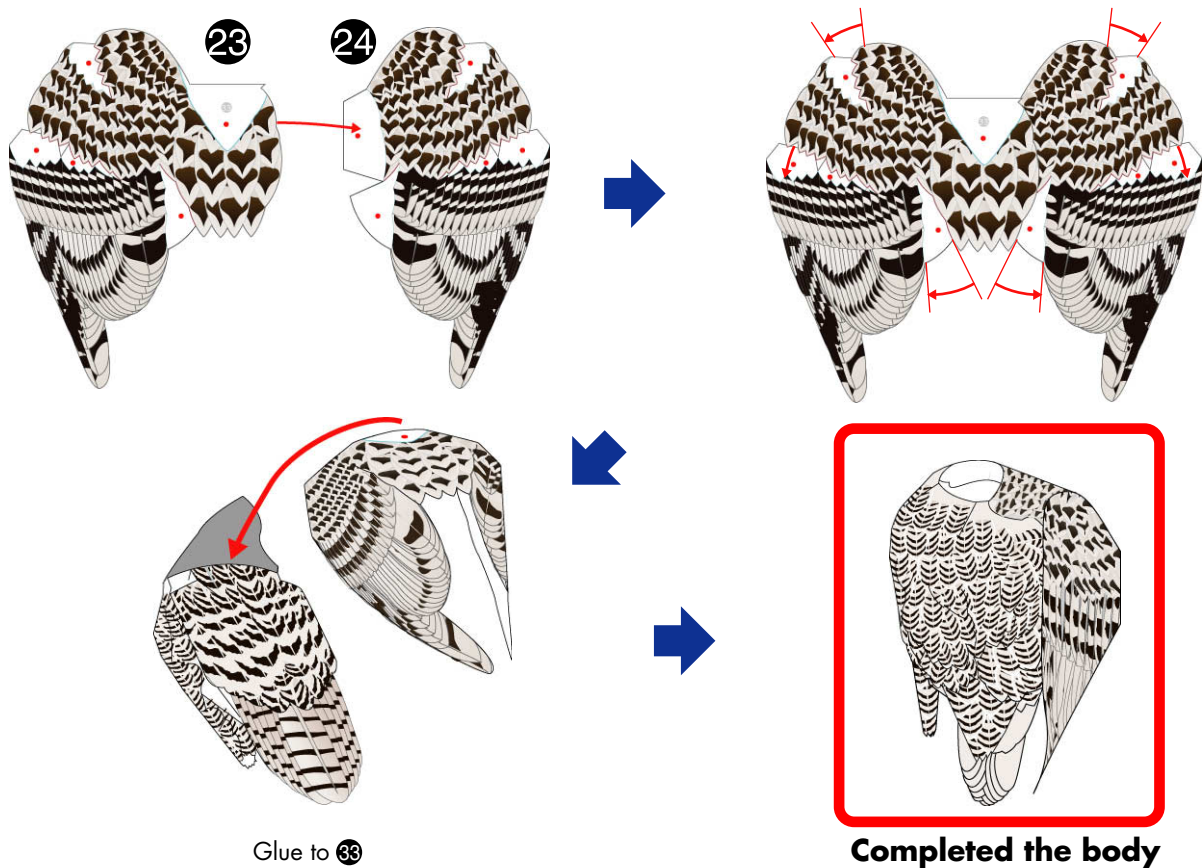
**Completed the body and flanks**



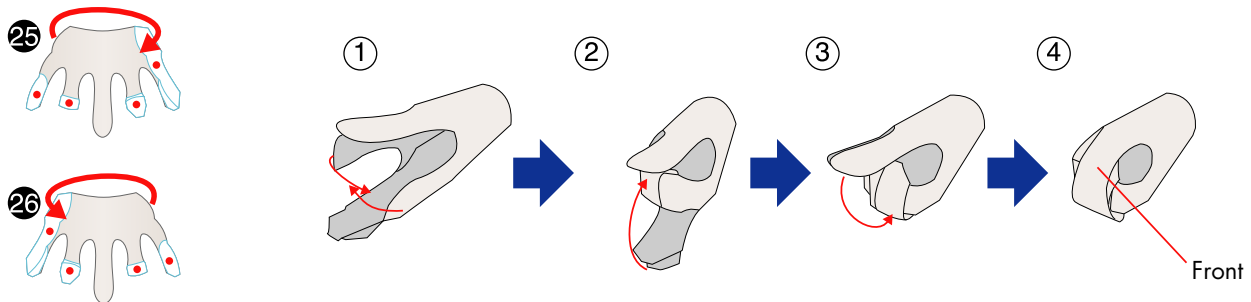
**Assemble 22, glue it together to 33, and attach them to the body.**



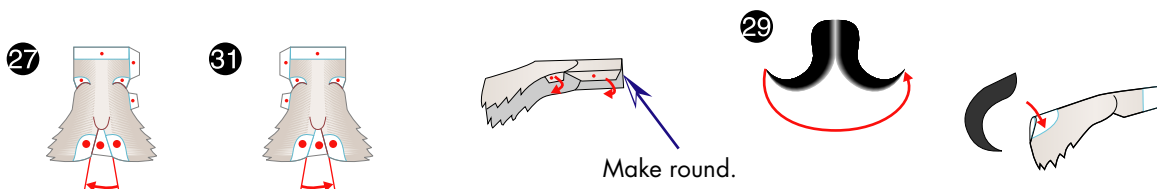
**Glue 23 and 24 together, and assemble them, and attach them to the body.**



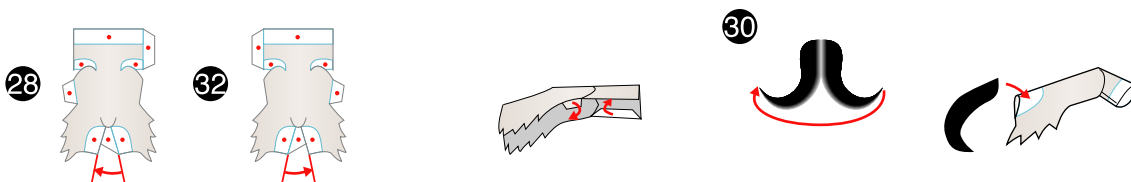
## Assemble 25 and 26.



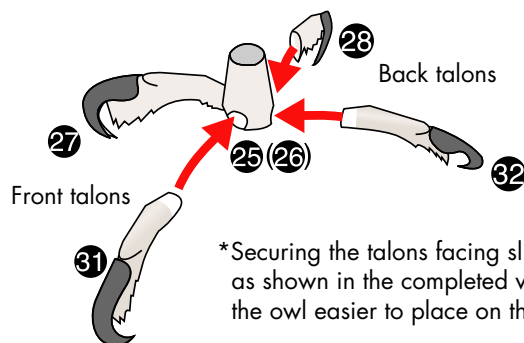
## Assemble 27 and 31, and glue 29 to make the front talons.



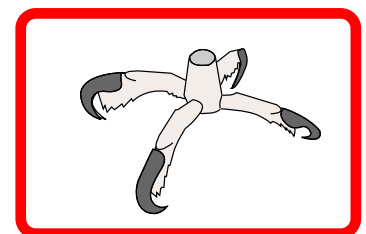
## Assemble 28 and 32, and glue 30 to make the back talons.



## Insert 27, 28, 31, and 32 into 25/26, secure them with glue and the legs are complete.

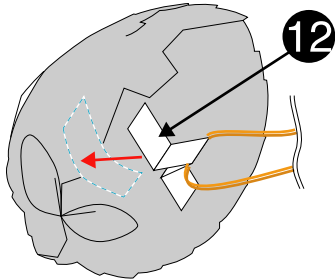


\*Securing the talons facing slightly downwards as shown in the completed view, will make the owl easier to place on the stand.



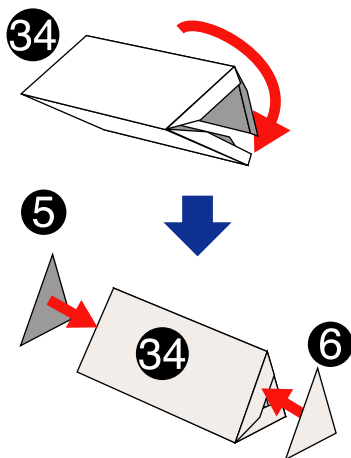
**Completed the legs**

Use ⑫ to attach the head to the body, and insert the legs into the body.



⑫

⑫



Fold the stand ③④ into a triangular prism shape and attach parts ⑤ and ⑥ to stabilize it.



Set up the snowy owl by perching it on the stand. The owl's head can be turned to face different directions as you please.



**Complete!**