

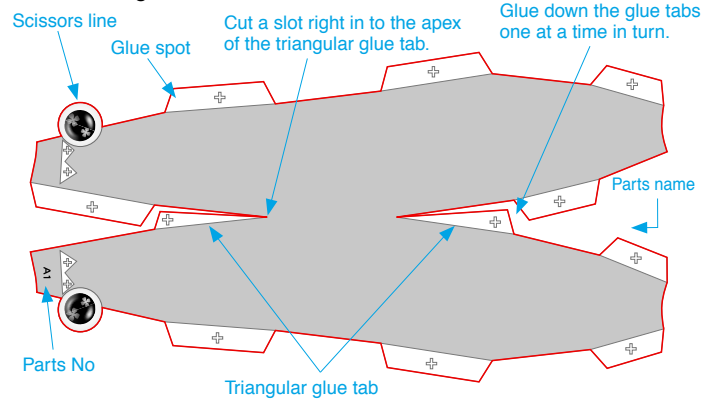


A Assemble the head

Use patterns: Page2 / Page3.

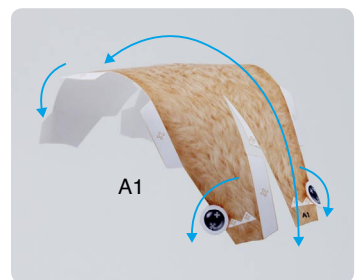
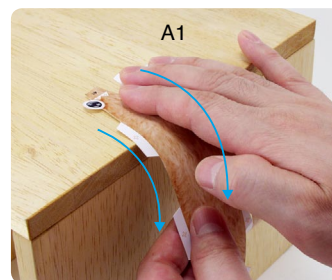
① Cut out A1 by cutting along the lines.

★ Cut along the line marked ———.



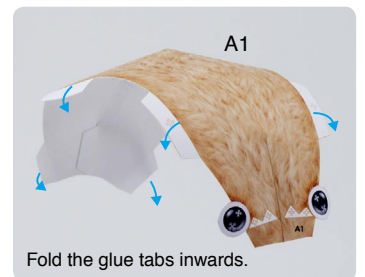
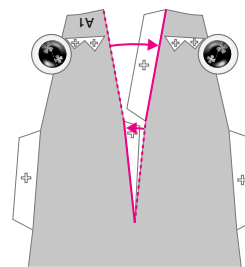
② The parts will be easier to assemble if curled.

★ Using the photo as a guide, apply pressure with the palm of your hand, gradually curling the paper in the direction of the arrow.



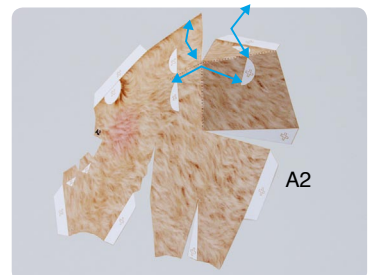
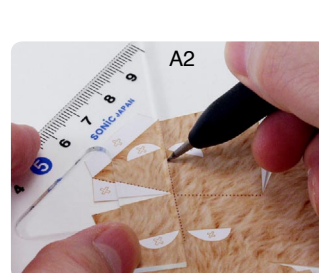
③ Add a slight curl to A1 when attaching it.

★ Attach the triangular glue tabs so that the front side becomes convex.



④ Make a mountain fold on A2 and A3.

★ Trace along the mountain fold line with a pencil, scoring it to make it easier to fold.



Tools

Scissors
Paste, or woodwork glue
Stencil pen, or bodkin
Ruler

Notation Key

——— Scissors line
..... Mountain fold
- - - Valley fold
+ Glue spot
A1, B1 Parts No.

◆ The Assembly instructions are divided into five blocks: A (head), B (body), C (legs), D (arms), and E (Items). Follow the instructions for each block to assemble your teddy bear.

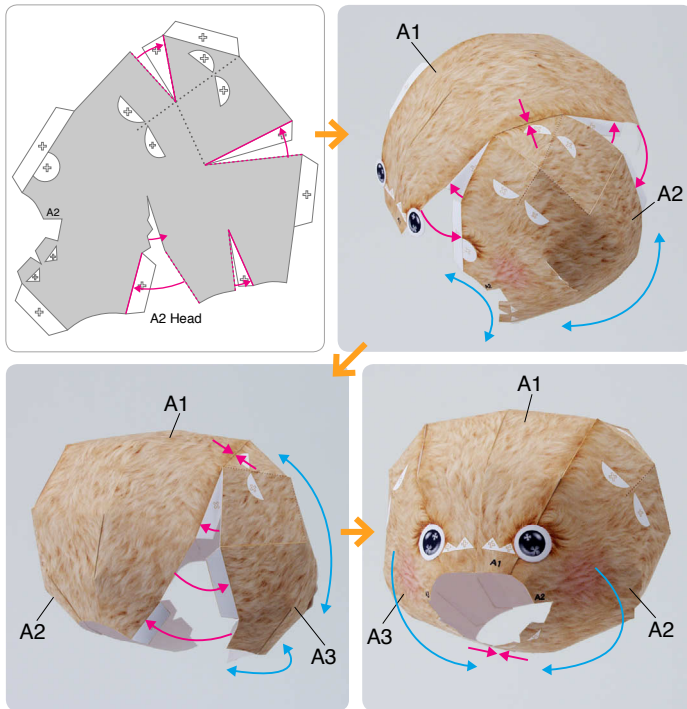
◆★ marks a basic assembly technique that remains the same regardless of the part. Instructions are printed only for the first instance.

<Caution>

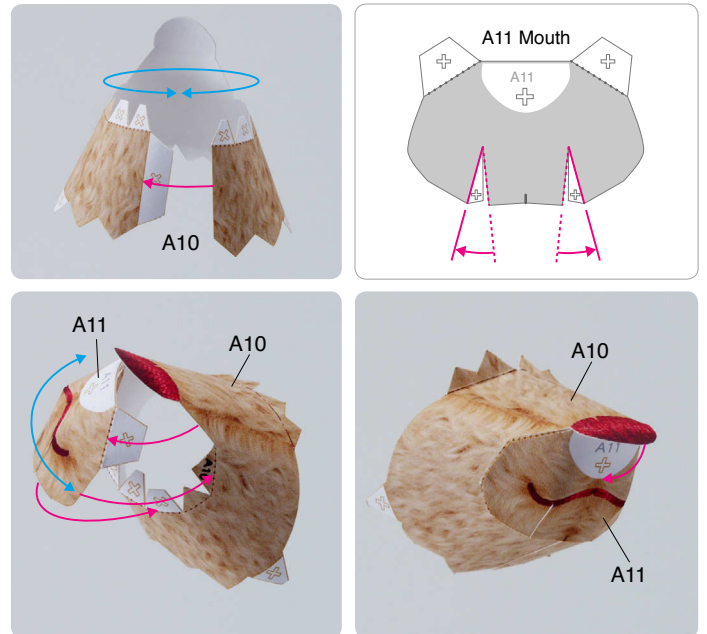
- ✂ Keep scissors and glue away from small children.
- ✂ Be careful not to cut your fingers when using scissors.

- ⑤ Cut out A2 and A3, curl them and glue the triangular glue tabs, attaching each to A1.

★ Using the photo as a guide, attach in the direction of the arrow.



- ⑧ Assemble A10 and A11, and attach to the head.

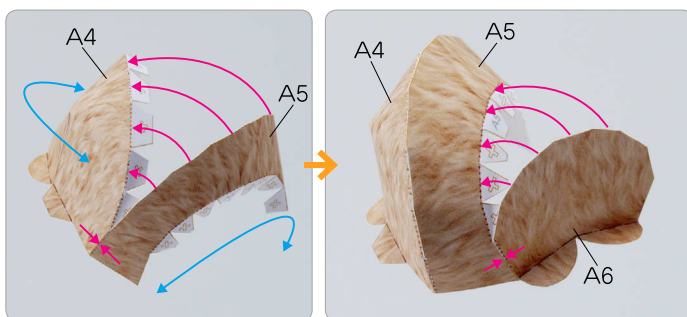


※ Note: The completed mouth will be attached in the last step.

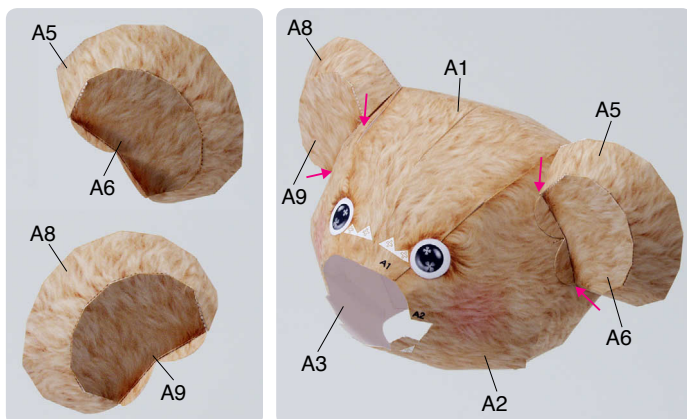
B Assemble the body

Use pattern: Page4 / Page5.

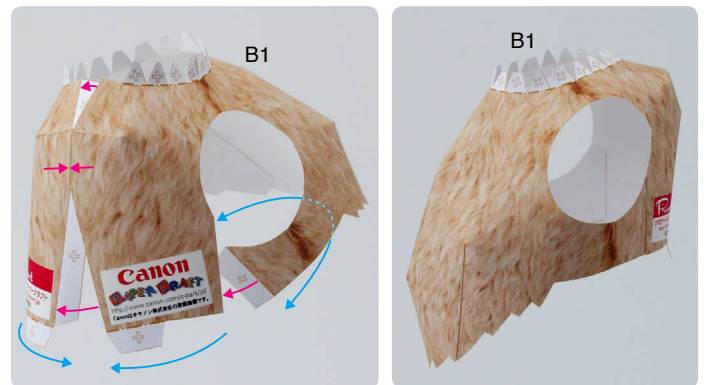
- ⑥ Cut out A4, A5 and A6, score the mountain and valley fold lines and assemble the pieces.



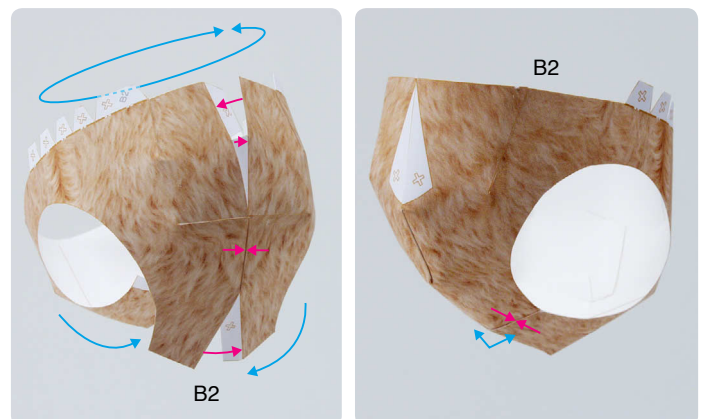
- ⑦ Assemble A7, A8 and A9 in the same way, and attach the ears to the head.



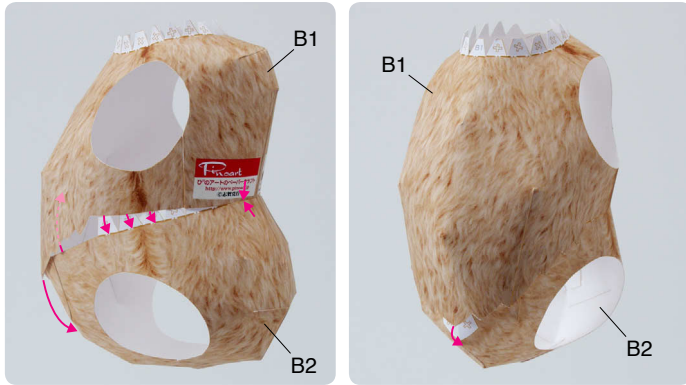
- ① Assemble B1.



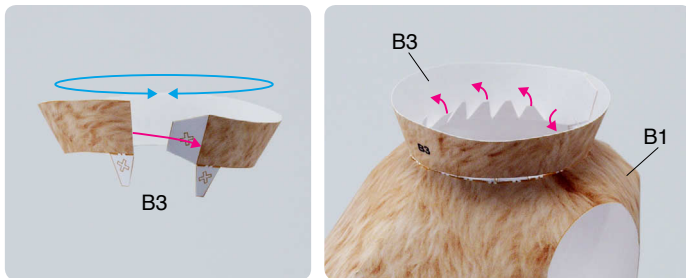
- ② Assemble B2.



③ Attach B1 and B2 together.



④ Assemble B3 and attach it to B1 to complete the body.

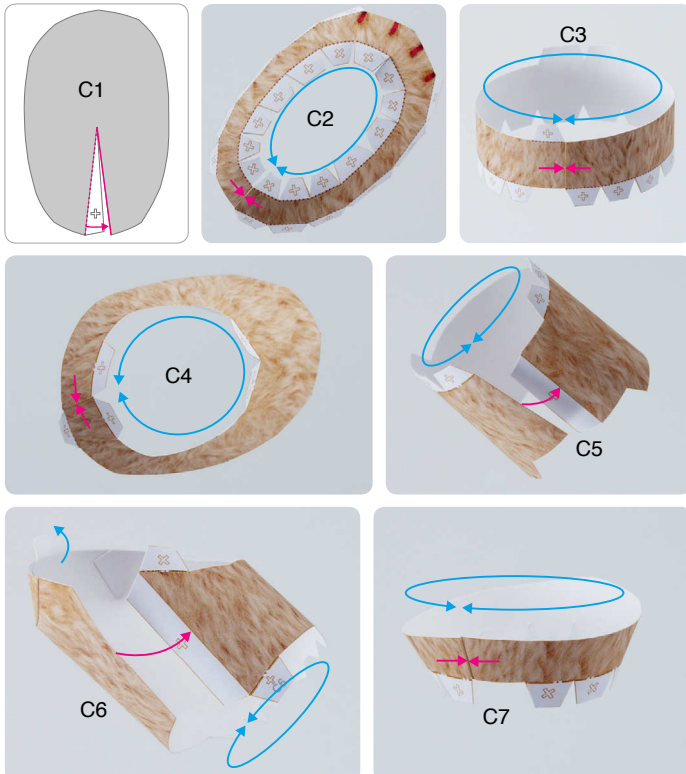


✂ Note: The completed head will be fitted in a later step.

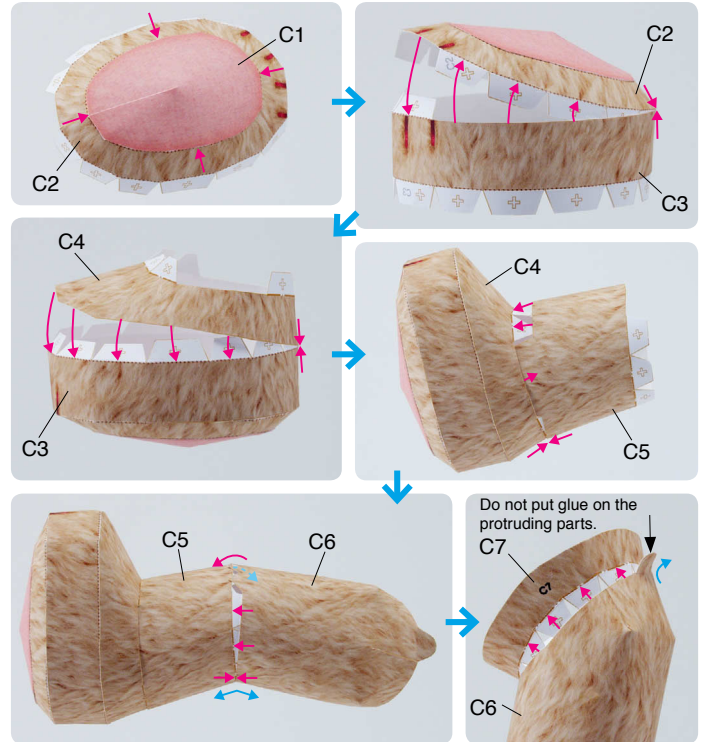
C Assemble the legs

Use pattern: Page6 / Page7.

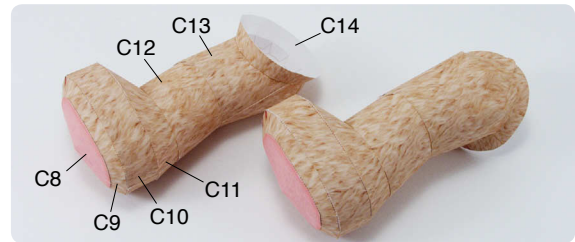
① Assemble parts C1 through C7.



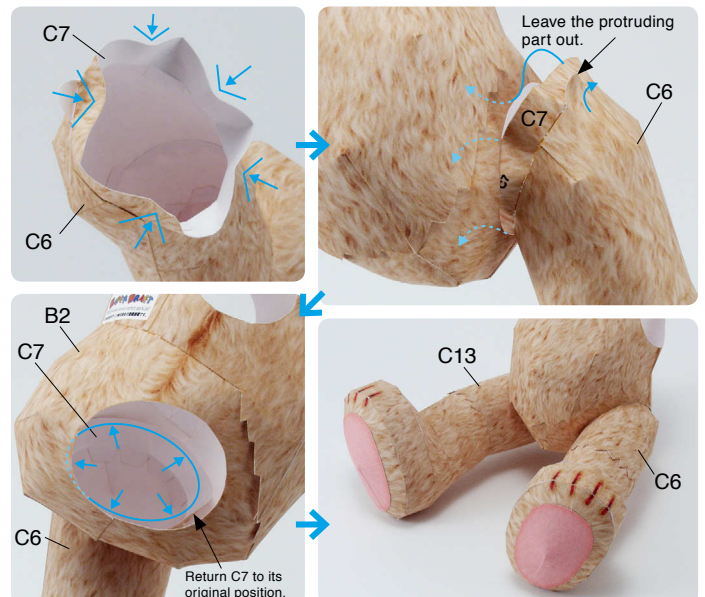
② Attach C1 through C7 together.



③ Assemble parts C8 through C14 in the same way.



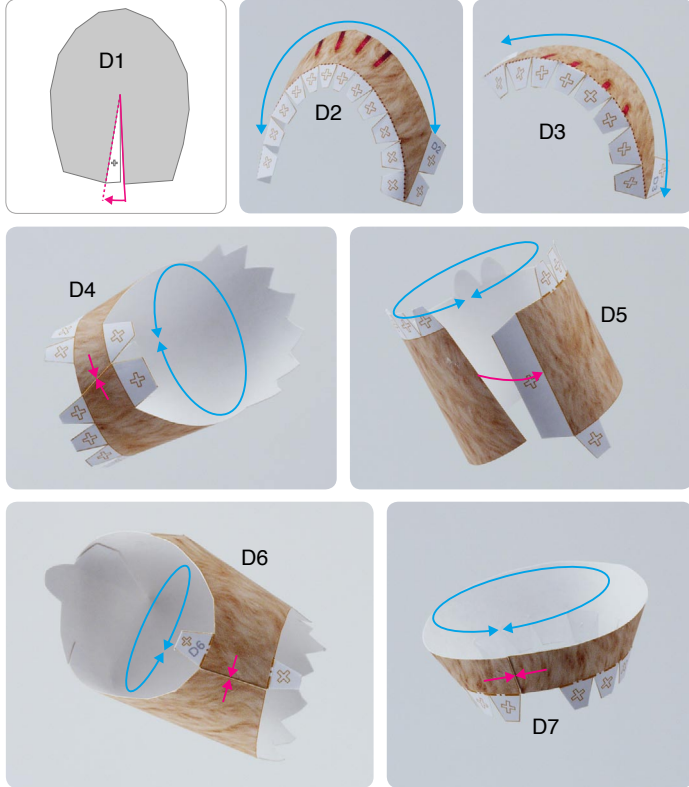
④ Fit both legs to the completed body.



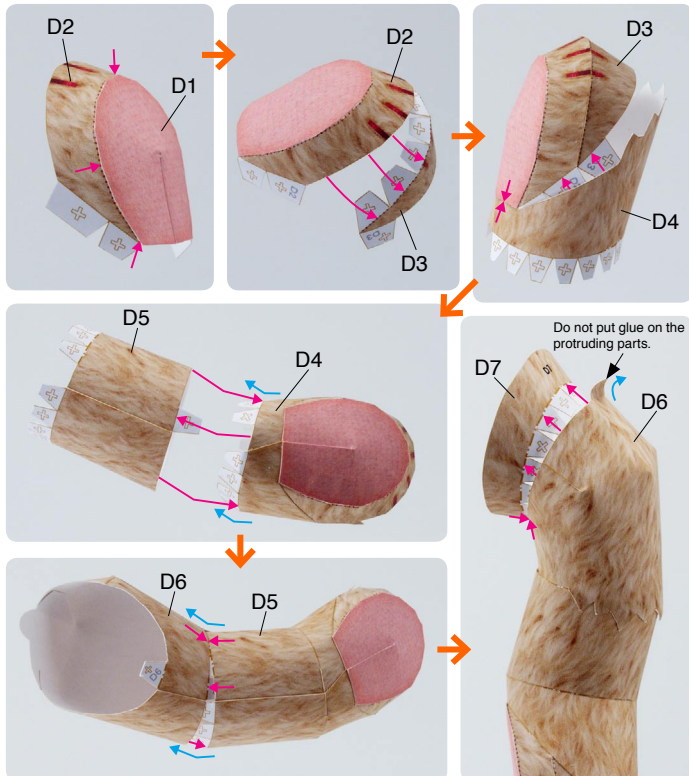
D Assemble the arm

Use pattern: Page8.

① Assemble parts D1 through D7.



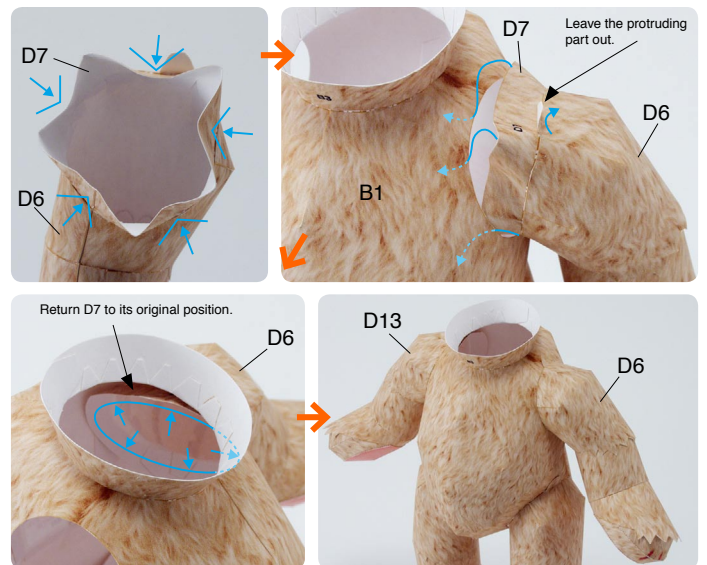
② Attach D1 through D7 together.



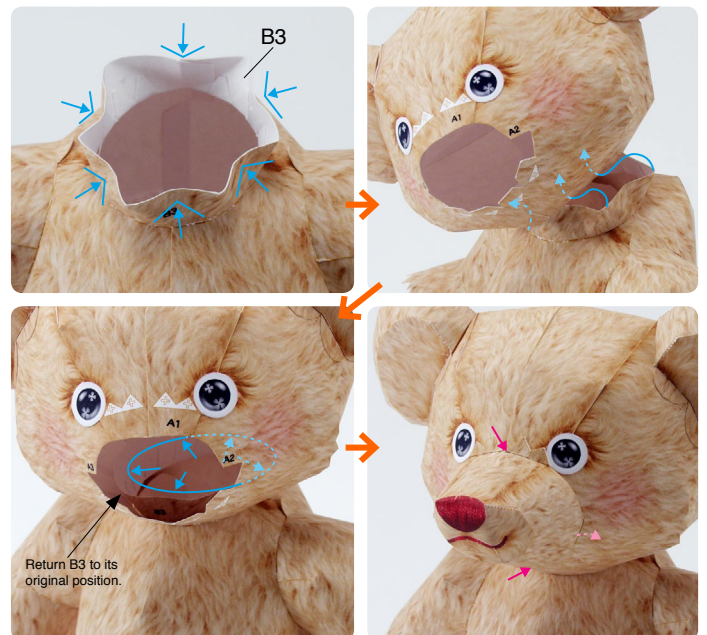
③ Assemble parts D8 through D14 in the same way.



④ Fit both arms to the completed body.



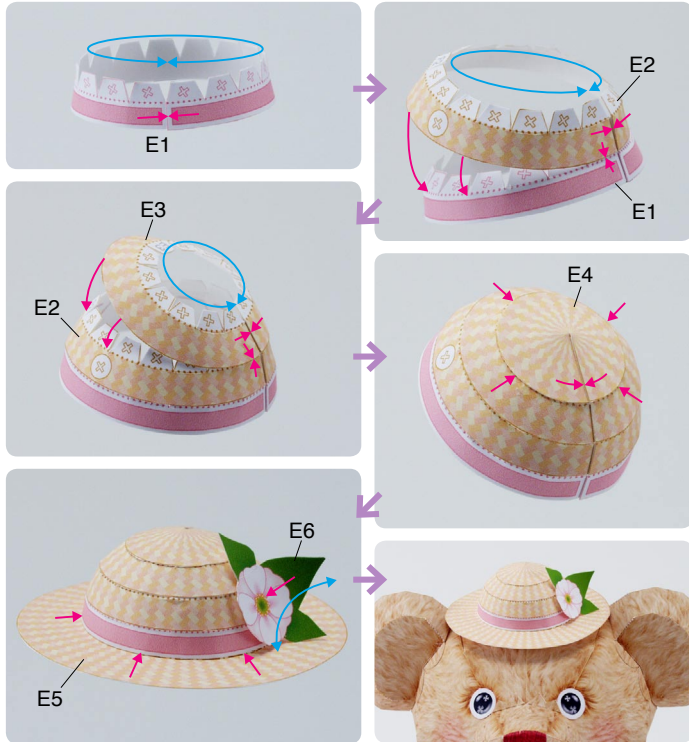
⑤ Fit the head to the body, and attach the mouth.



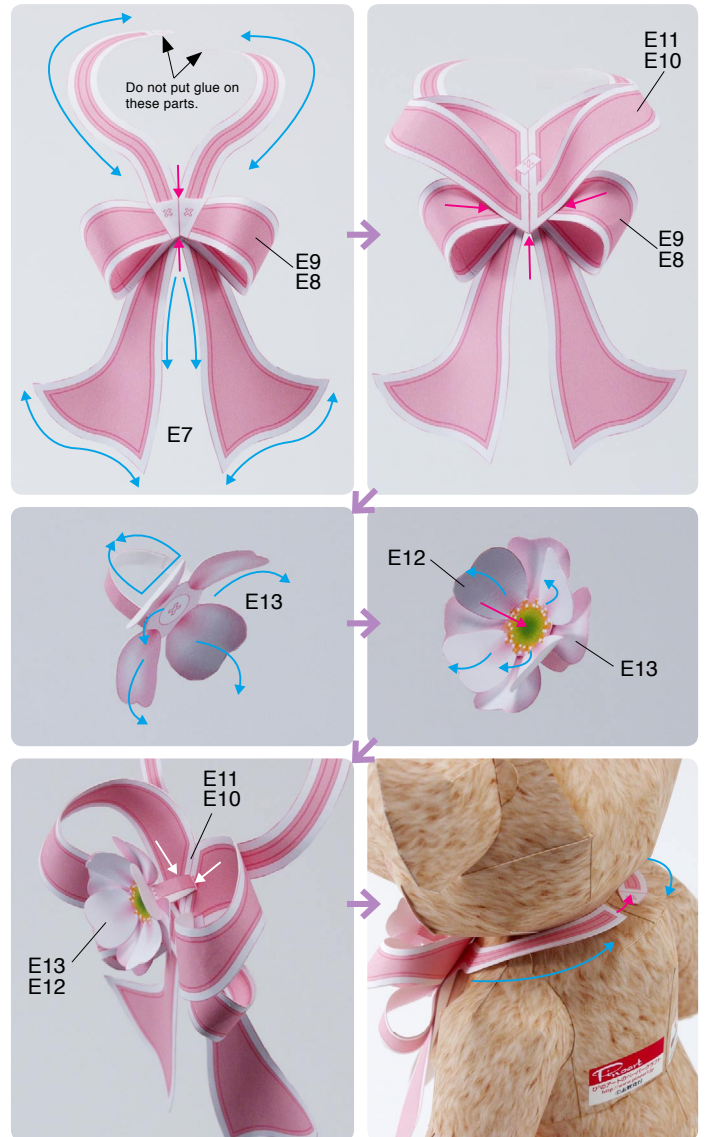
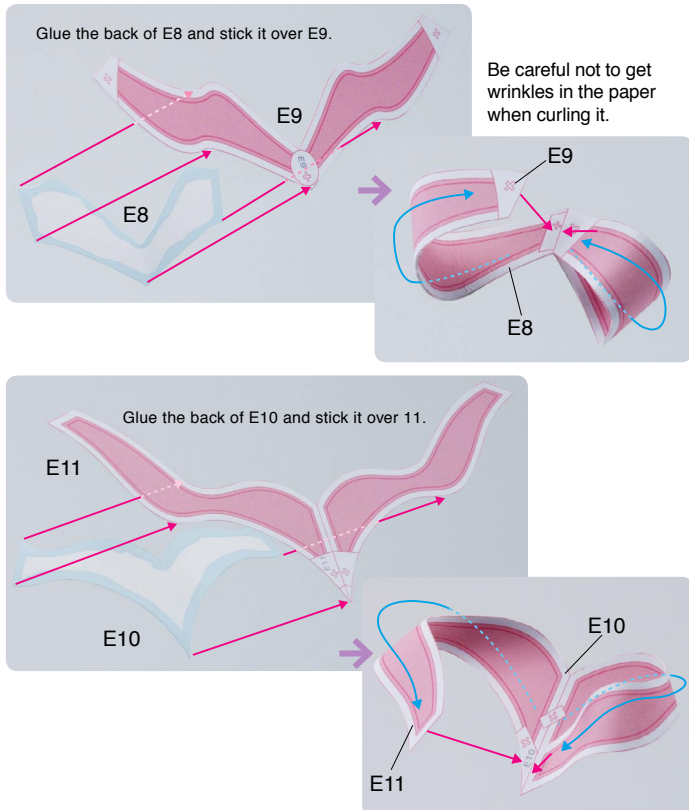
E Assemble the item

Use pattern: Page9.

① Attach E1 through E5 together.



② Assemble parts E7 to E13 and put them together in sequence, then drape them around the neck.



③ Complete!



◆ Try posing your teddy bear by moving its head, arms and legs.